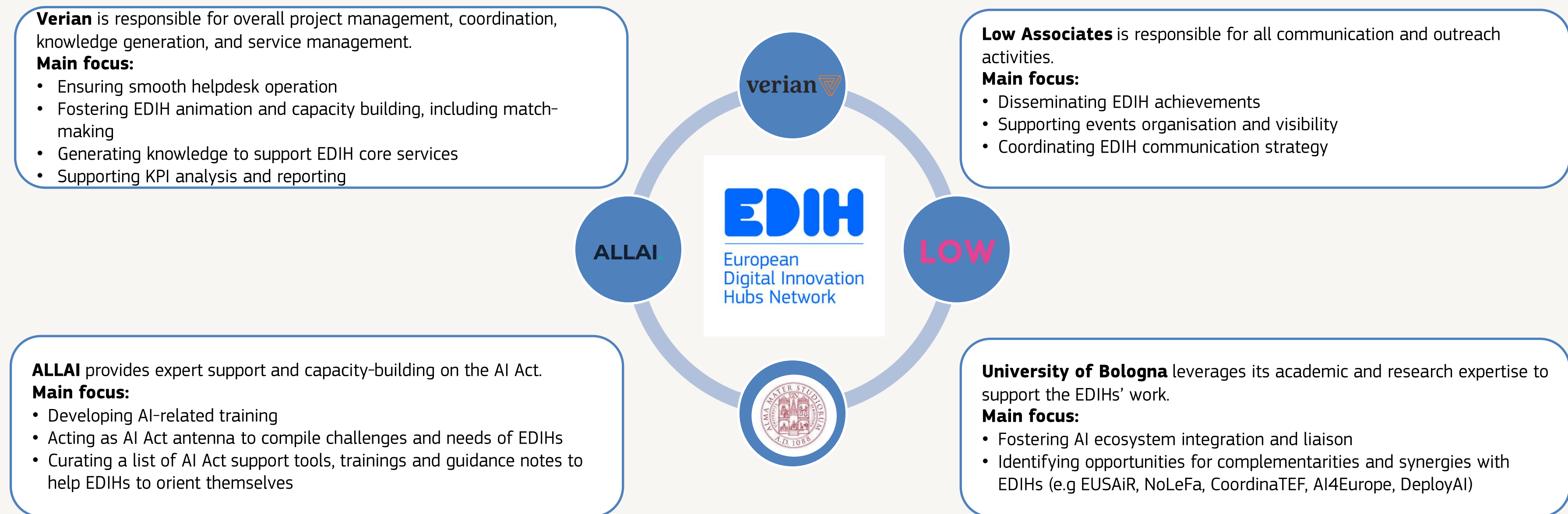


# DTA – Digital Transformation Accelerator (phase 2)

Supporting EDIHs to connect and improve their services

# A DTA consortium built to support future-proof EDIHs

## Bringing a diverse team to support the network.



---

# Our approach to support the EDIH community

## We build on the existing EDIH expertise

---



Building on the existing resources and tools



Engaging EDIHs in the preparation and delivery of capacity building events



Leveraging mutual learning to share existing promising practices



Supporting EDIHs at different points of their learning journey



Creating a space for productive exchange among EDIH and within the wider ecosystem



EDIHs as a one-stop shop for AI innovation

Enhanced service delivery with a stronger focus on AI uptake

Full integration into the EU AI ecosystem

Data-driven decision making

Increased visibility

Support for companies and the public sector

---

# DTA Core Services

## DTA supports the network and the needs of EDIHs

---



- **Capacity building**

- Structured training curriculum
- AI Act implementation support strategy (AI Act Antenna)
- Ecosystem integration



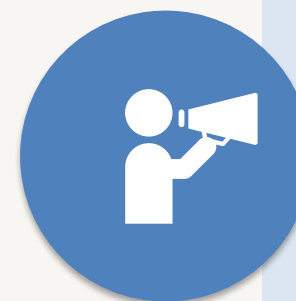
- **Community building**

- Listening activities
- Thematic Working Group support
- Annual EDIH summit
- Matchmaking
- Online and onsite event



- **Enhancement of core services**

- Test before invest, referral guidelines to TEFs, AI Factories, Data Spaces and AI regulatory Sandboxes
- Networking opportunities
- Skills and training
- Access to finance



- **Online presence and communication**

- EDIH web portal (multilingual)
- EDIH TV
- Daily social media posts
- Sector-specific blogs/newsletters



# How to reach us?

Through the **helpdesk function**:  
<https://edihnetwork.freshdesk.com/support/home>

Via **e-mail**: [info@edihnetwork.eu](mailto:info@edihnetwork.eu) /  
[support@edihnetwork.eu](mailto:support@edihnetwork.eu)

